



884 MAYFIELD RD. MILTON, GA 30009

THE
REZERVE

THE PROPERTY

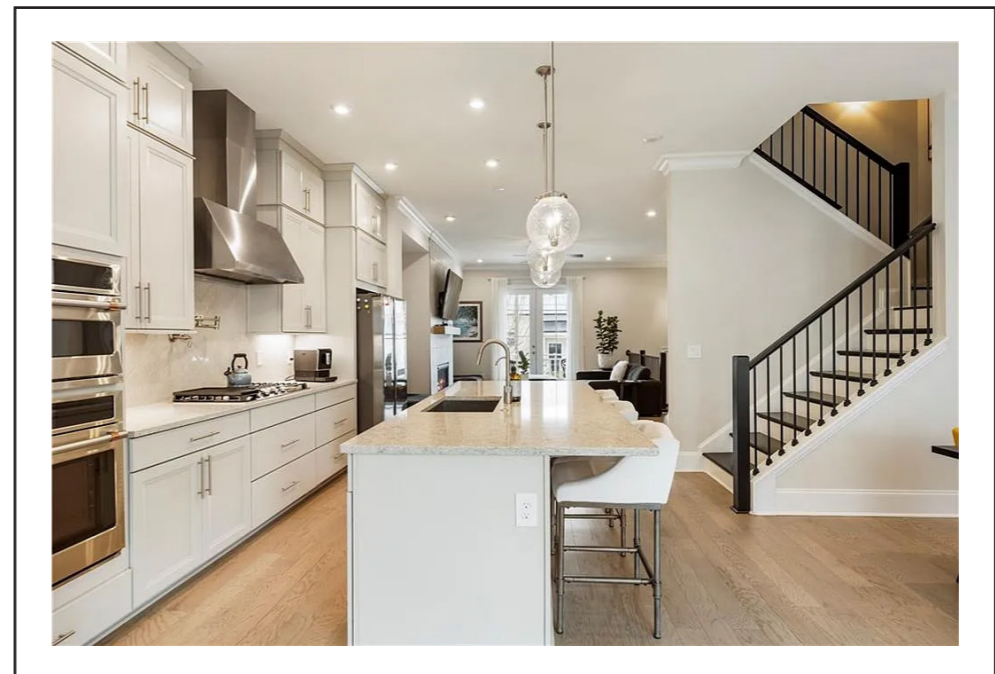
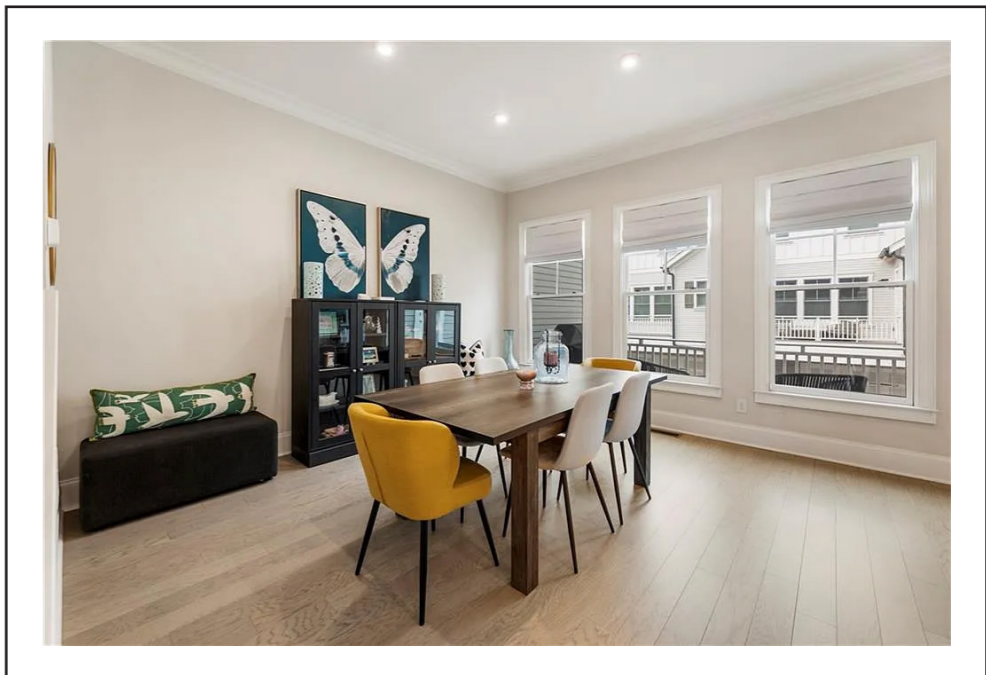
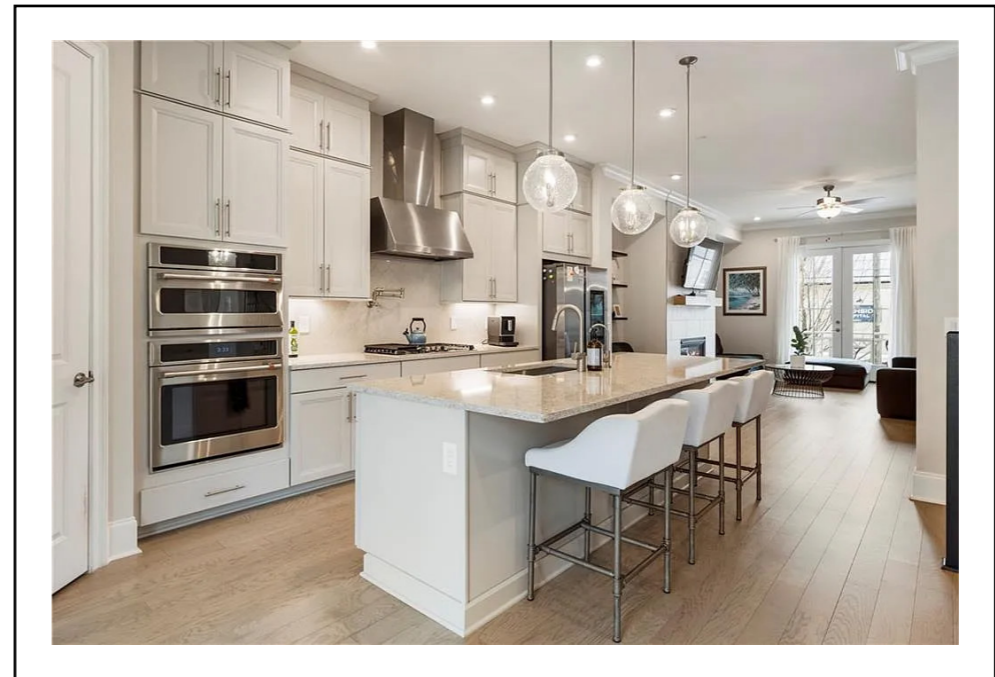
BEDROOMS 5

BATHROOMS 3.5

SQ.FT. 2,383

GARAGE 2 CAR

ARCHITECTURAL
STYLE TOWNHOUSE
TRADITIONAL



LAKESIDE AT CRABAPPLE

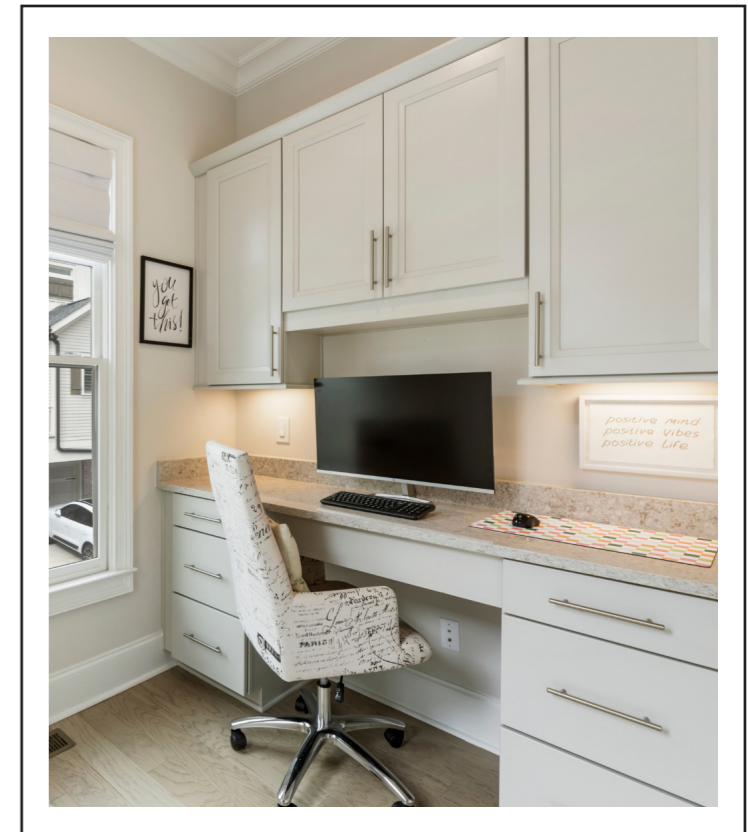
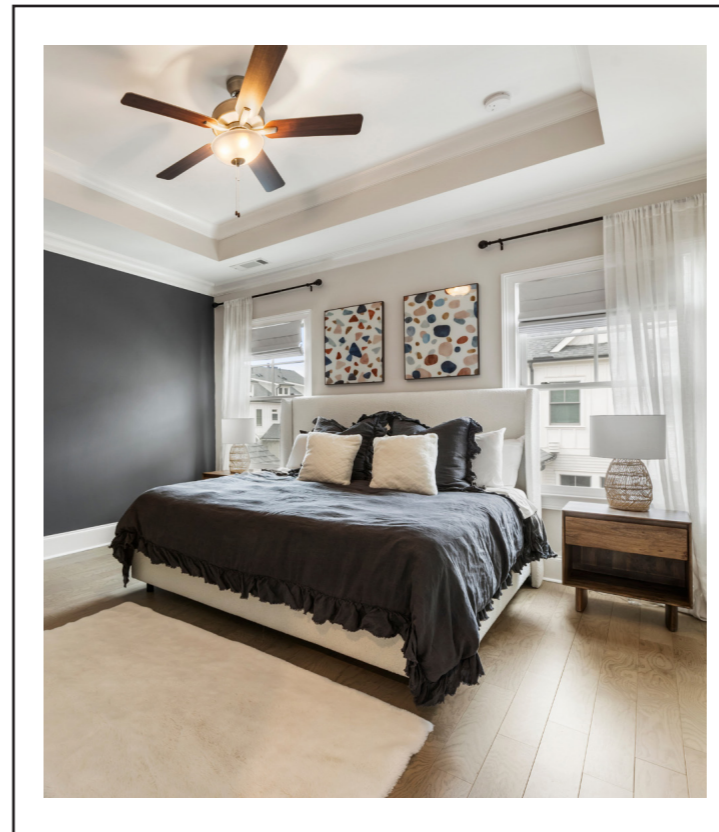
Downtown Crabapple living at its finest! Walkable to all the luxuries, coffee, restaurants, shopping and the library, to name just a few. This lovely townhome offers the perfect blend of comfort and functionality, featuring three spacious bedrooms and a dedicated office space ideal for remote work or creative pursuits. As you enter, you'll be welcomed by an openconcept living area, perfect for both relaxation and entertaining. The modern kitchen includes updated appliances and ample counter space, making meal prep a breeze.



A spacious dining room can accommodate a large table and extra seating. Finishing off the main floor is workspace that could become a home office or a butler's pantry. The primary bedroom includes a generous closet and an ensuite bathroom, while the two additional bedrooms are perfect for family or guests. The terrace level has a bonus office space that provides a quiet,productive environment away from the main living areas as well as the third fullbathroom. The entryway to the garage is complete with cubbies and coat hooks for those out-the-door necessities. With thoughtful design and plenty of natural light throughout, this townhome is a wonderful place to call home.

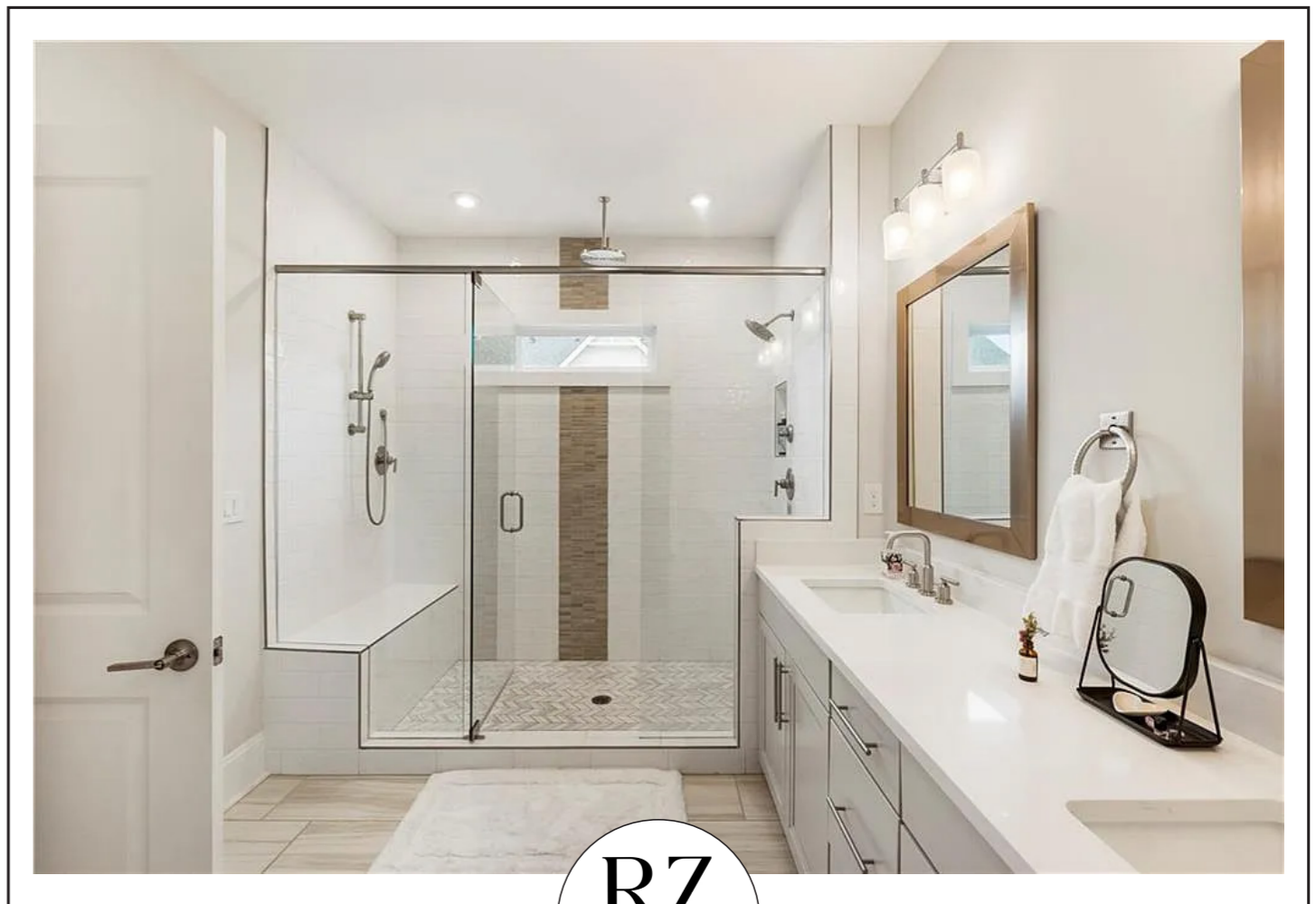


LIGHT-FILLED OPEN-CONCEPT LIVING

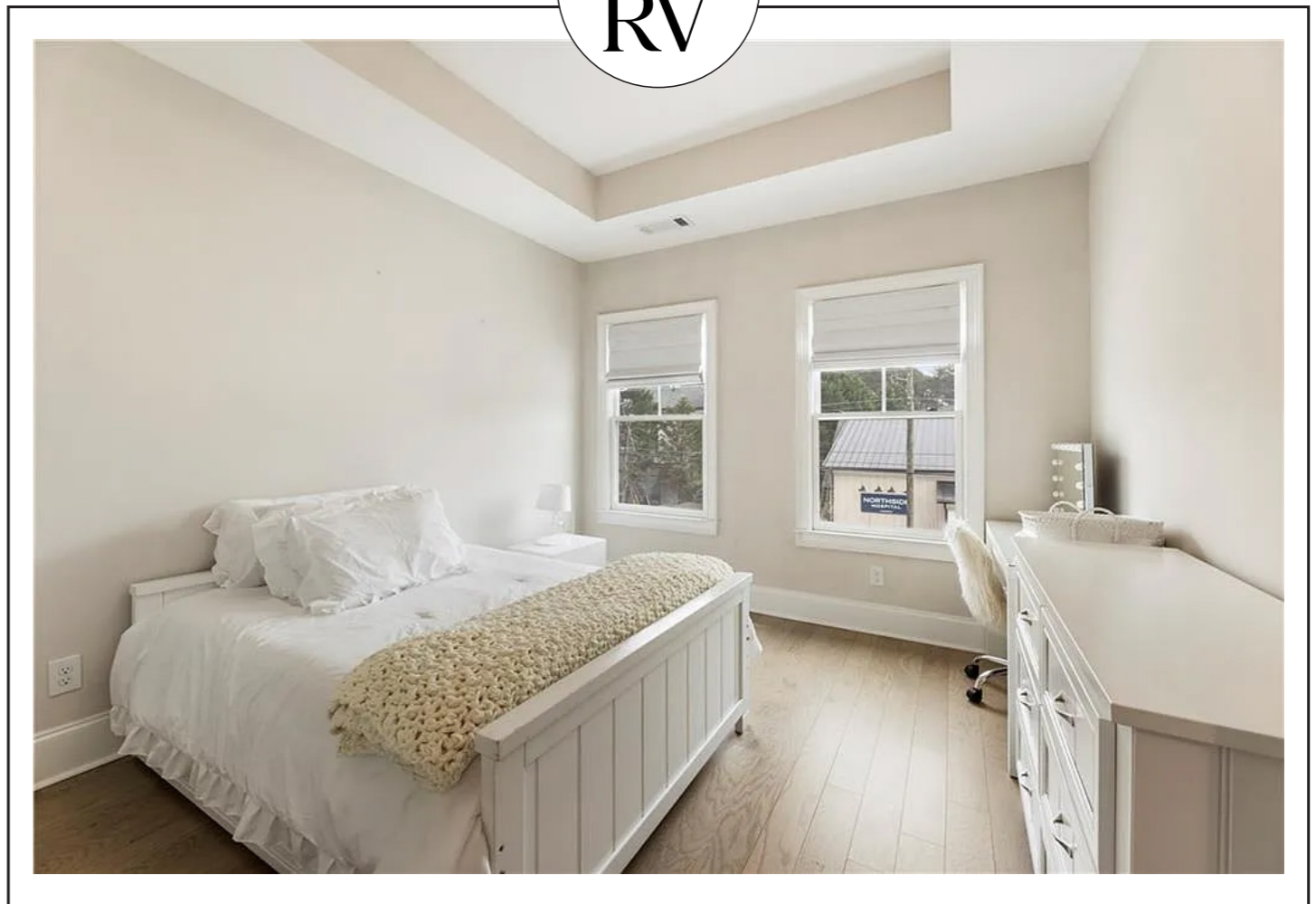




RZ
RV



RZ
RV





LAUREN COLE

O: 770.299.9529

M: 770.365.3597

LAUREN@THEREZERVE.COM

WWW.THEREZERVE.COM

THE
REZERVE

POWERED BY THE REZERVE LLC
THEREZERVE.COM

If you have an existing written brokerage relationship with another broker, this is not intended as a solicitation. Information is believed accurate but provided without warranty, express or implied, all parties should independently verify THE REZERVE complies with the Fair Housing Act and Equal Opportunity Act.